

KVM around the Airport

Concourse passenger information

Transmission of audio and video signals around the concourse for passenger flight information and emergency messaging.



ATC operations

Separate user workstations from noisy, heavy equipment for an enhanced environment and increased efficiency.



Ground operations

Vehicle movement control, training and airport administration.



Security

Connection of remote video cameras and surveillance devices for visual observation of airport facilities and perimeter.



Digital signage

Passenger entertainment, advertising and general information.

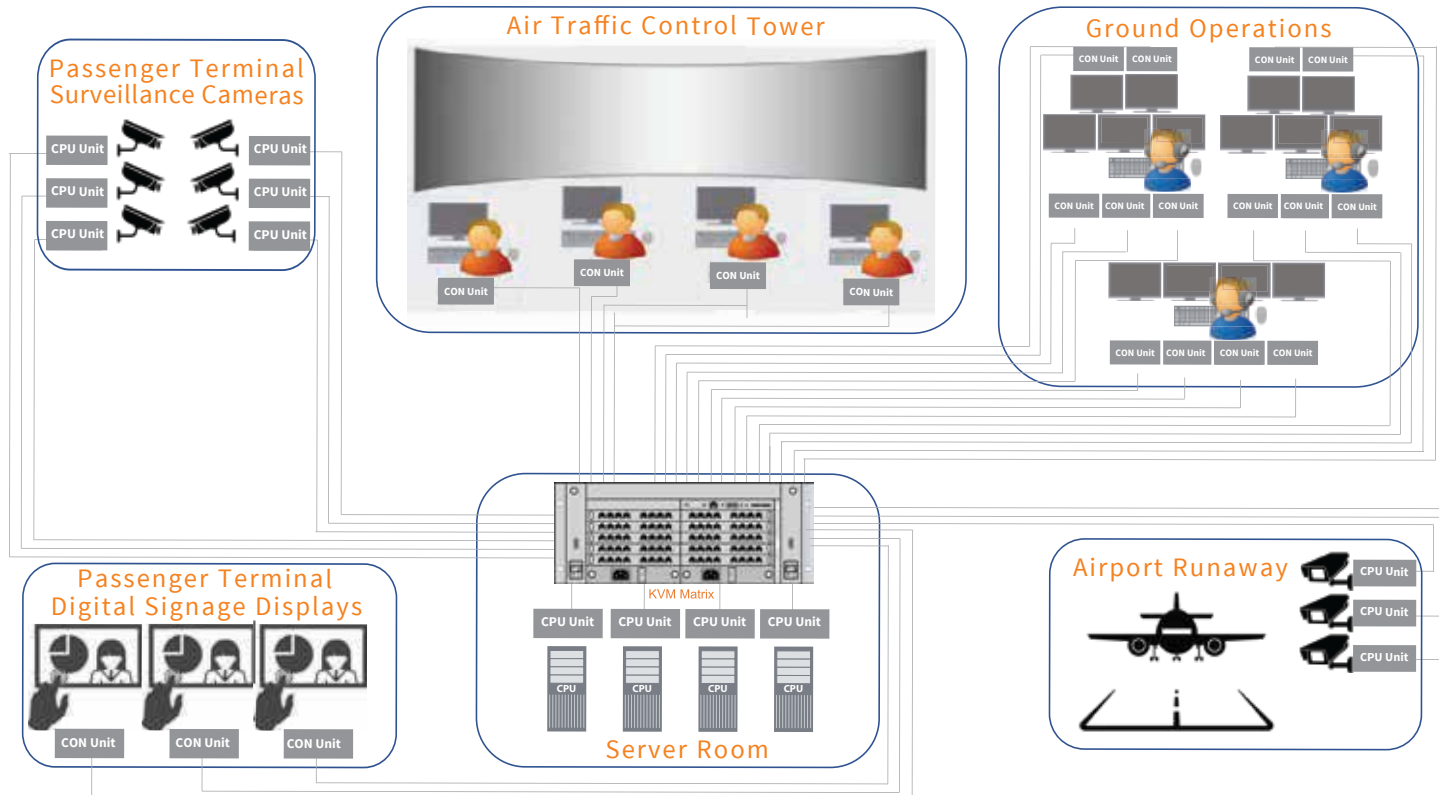


Data centre

Secure, reliable and instantaneous access and switching of computers.



Airport KVM Application



IHSE GmbH - Headquarters

Maybachstr. 11
88094 Oberteuringen
Germany



+49 (7546) 9248-0
+49 (7546) 9248-48

info@ihse.de
www.ihse.de

IHSE USA LLC

1 Corporate Drive
Cranbury, NJ 08512
United States

+1 (732) 738 878 0

info@ihseusa.com
www.ihseusa.com

IHSE GmbH Asia Pacific Pte Ltd

158 Kallang Way, #07-13A
Singapore 349245

+65 (6841) 470 7

info@ihseapac.com
www.ihseapac.com

IHSE France

Catherine Berriat
Paris
France

+33 (678) 478 822

catherine.berriat@ihse.de
www.ihse.de

IHSE Israel

Yehuda Levin
Shoham
Israel

+972 (544) 320 768

levin.yehuda@ihse.de
www.ihse.de

**KVM IN
AIR TRAFFIC MANAGEMENT
AND AIRPORT OPERATIONS**

Access any device, instantly

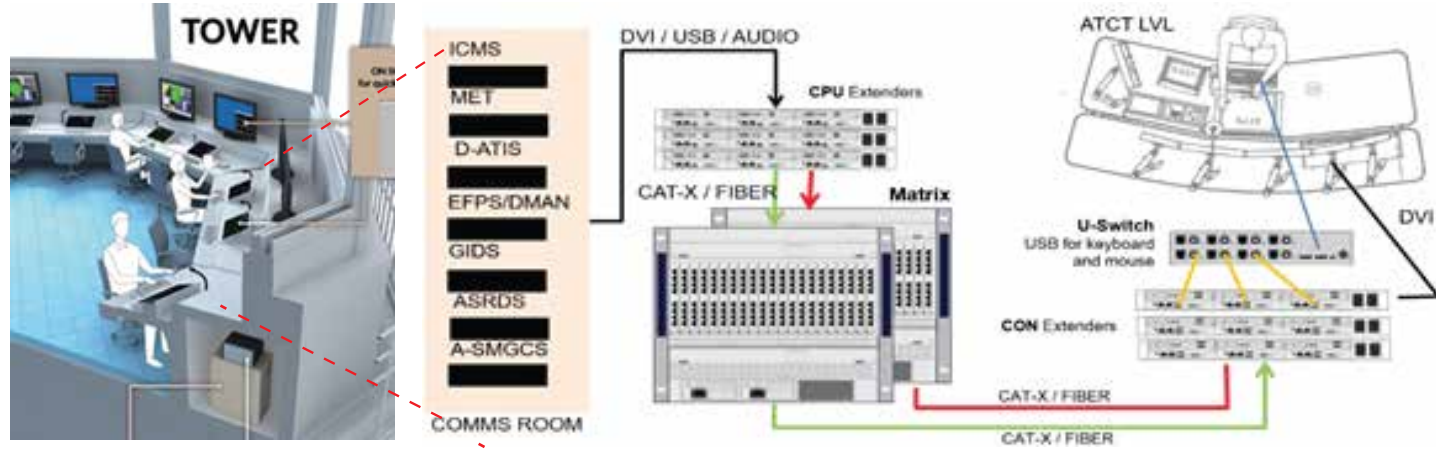
Information is crucial to safe and efficient air operations. IHSE KVM technology transports real-time data throughout the entire air traffic control and management process, enhancing safety and operational efficiency from take off to landing, and beyond.

IHSE systems deliver critical data to control towers, aid ground and air personnel training, assist with baggage handling and inform passengers through terminal information and signage.

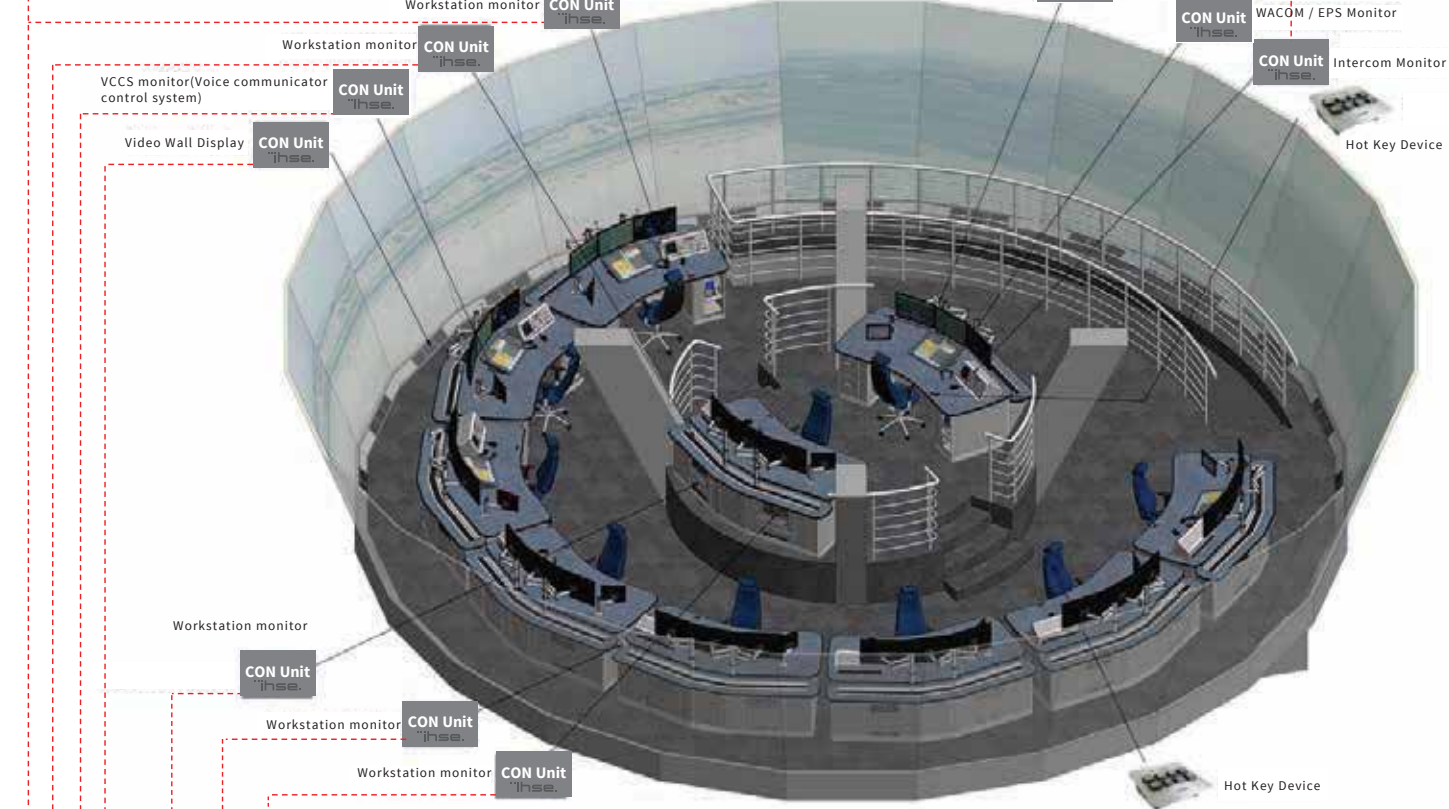
All with multiple-levels of system redundancy, back-up and failsafe operation to ensure continuous, mission-critical operation.



Air Traffic Control Tower Setup



Keyboard, Video, Mouse (KVM) Solutions for Air Traffic Management



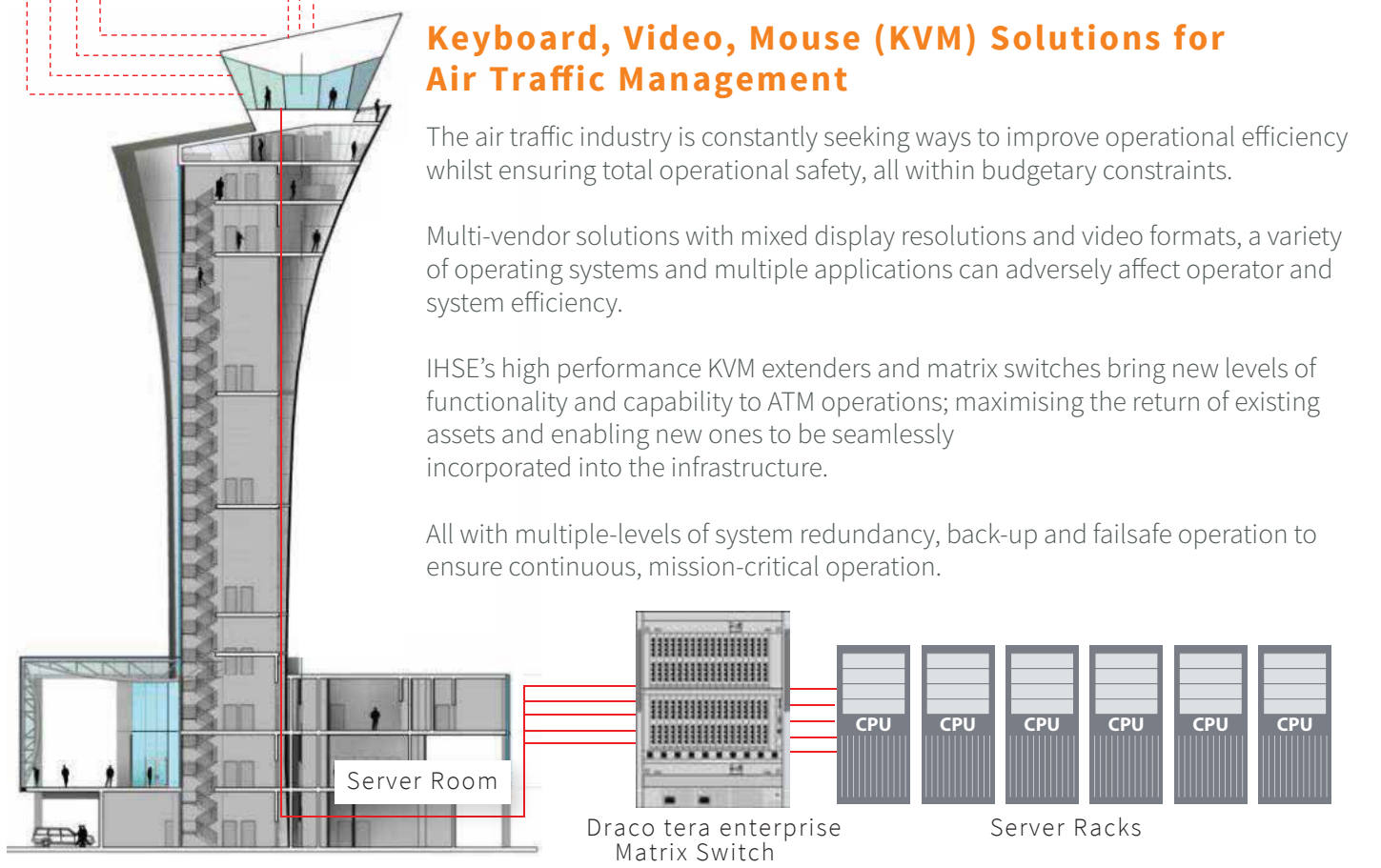
Keyboard, Video, Mouse (KVM) Solutions for Air Traffic Management

The air traffic industry is constantly seeking ways to improve operational efficiency whilst ensuring total operational safety, all within budgetary constraints.

Multi-vendor solutions with mixed display resolutions and video formats, a variety of operating systems and multiple applications can adversely affect operator and system efficiency.

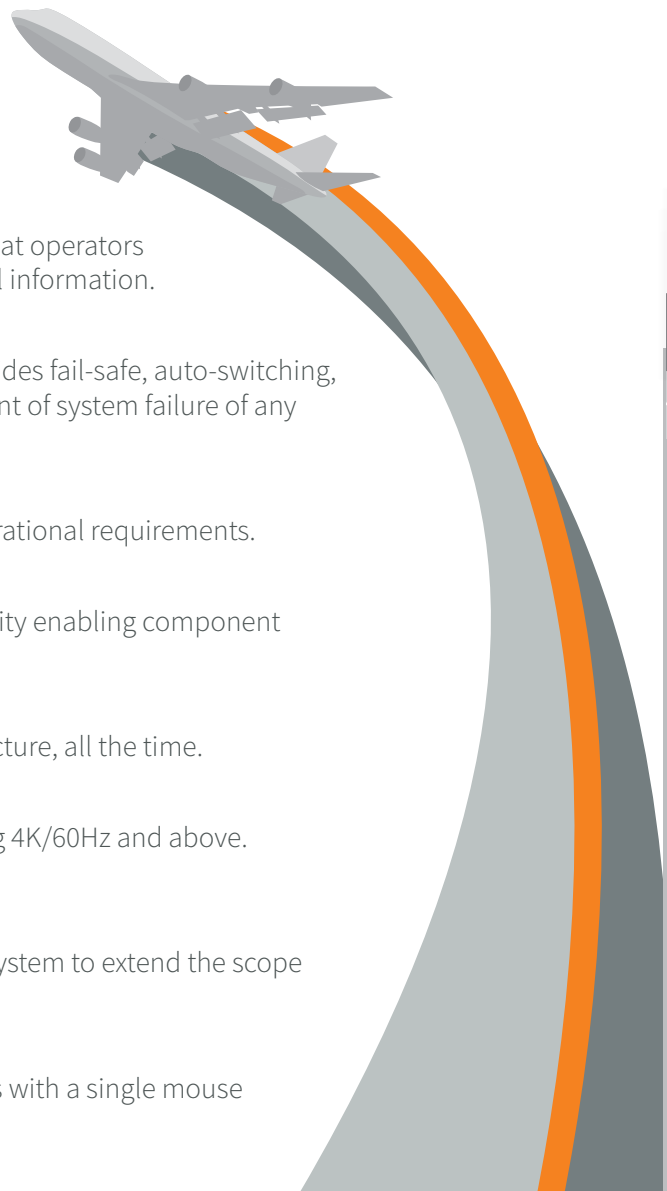
IHSE's high performance KVM extenders and matrix switches bring new levels of functionality and capability to ATM operations; maximising the return of existing assets and enabling new ones to be seamlessly incorporated into the infrastructure.

All with multiple-levels of system redundancy, back-up and failsafe operation to ensure continuous, mission-critical operation.



Key Features and Benefits of KVM Extenders & Switches

- ✓ **Reliable extension**
IHSE KVM extenders connect computers to user workstations over distances of 140 m with copper cables and up to 10 km using fiber connections.
- ✓ **Instant switching**
Switching between sources occurs with no latency, ensuring that operators are not faced with blank or frozen screens and do not miss vital information.
- ✓ **Redundancy and backup**
The Draco tera's fully-redundant KVM system architecture provides fail-safe, auto-switching, back-up connections to ensure continued operation in the event of system failure of any component.
- ✓ **Administrator control and management**
Extensive set-up, control and system monitoring meets all operational requirements.
- ✓ **Continuous operation**
Designed for 24/7 continuous operation with hot-swap capability enabling component replacement without system shut-down.
- ✓ **Visually lossless image distribution**
With no image degradation or loss, operators see the whole picture, all the time.
- ✓ **All video formats**
Support for all current video formats and resolutions, including 4K/60Hz and above. IHSE maintains a future-proof product portfolio strategy.
- ✓ **Matrix grid expansion**
Switches can be interconnected under a single management system to extend the scope of the system.
- ✓ **Multi-screen control**
Operators can control several independent CPUs and monitors with a single mouse and keyboard; reducing confusion and desk clutter.



KVM in Control Centres, Training and Simulation

